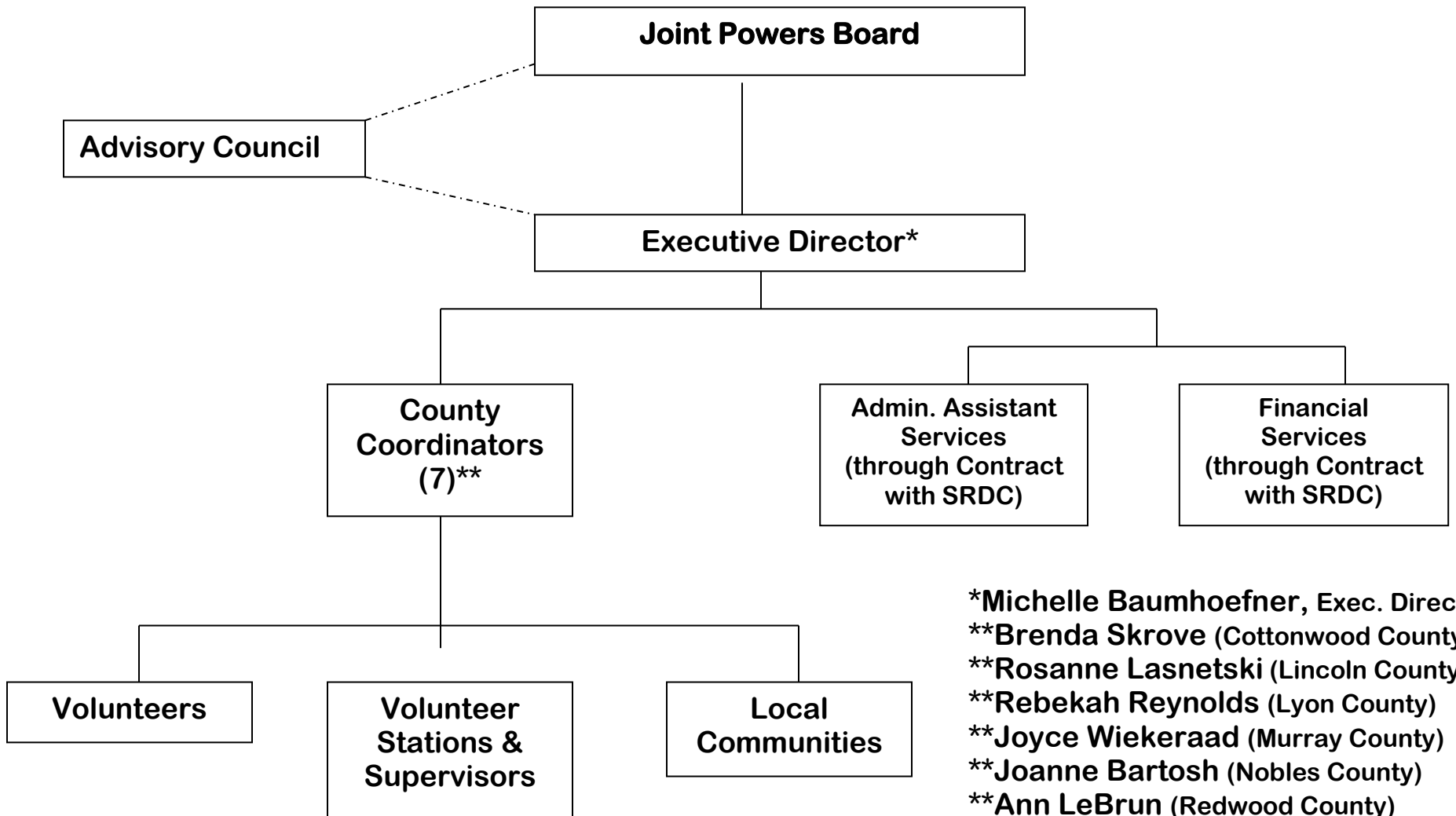


**A.C.E. of SW MN
Organizational Chart
April 2018**



- *Michelle Baumhoefner, Exec. Director
- **Brenda Skrove (Cottonwood County)
- **Rosanne Lasnetski (Lincoln County)
- **Rebekah Reynolds (Lyon County)
- **Joyce Wiekeraad (Murray County)
- **Joanne Bartosh (Nobles County)
- **Ann LeBrun (Redwood County)
- **Norma Brands (Rock County)